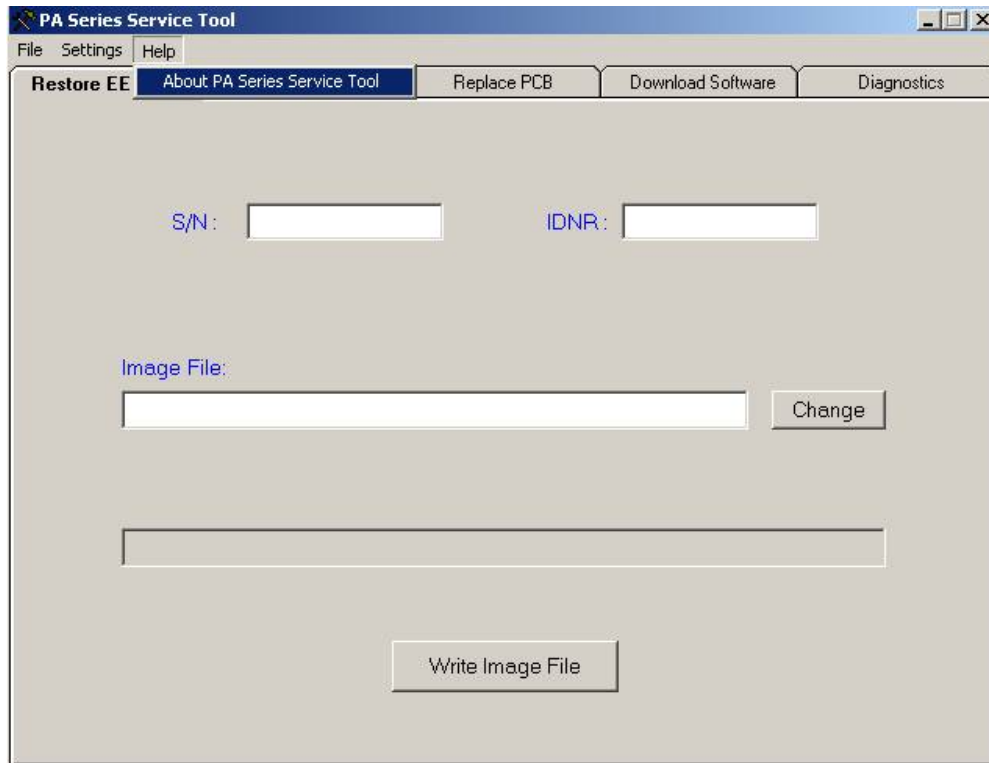


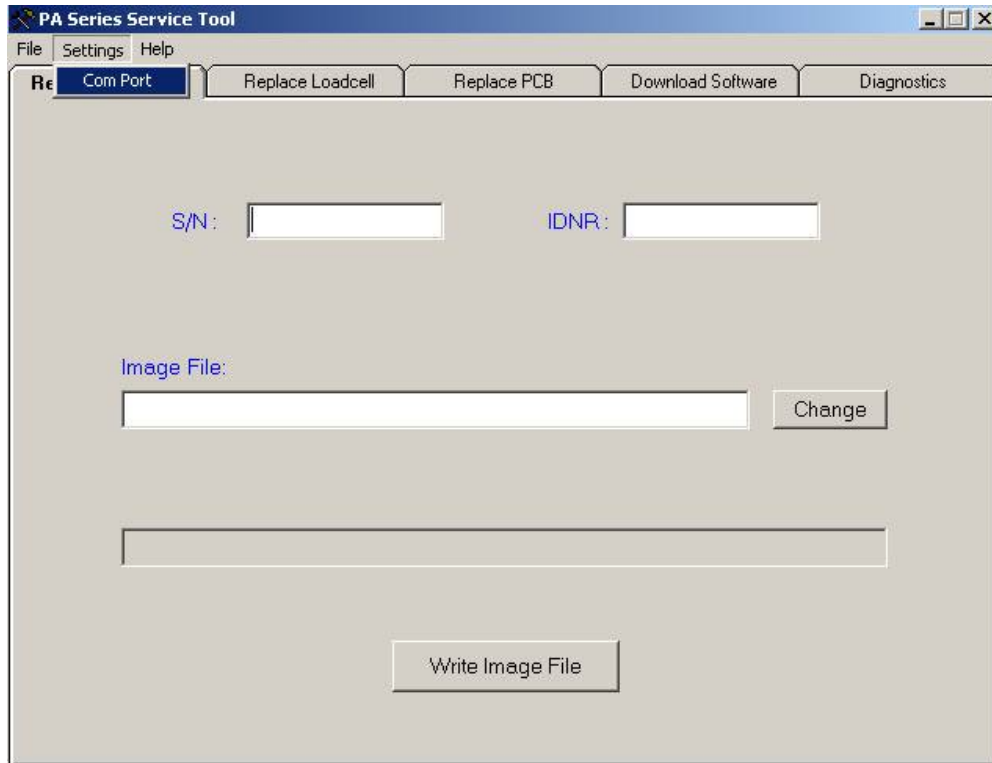


PA Series Service Tool for Dealer

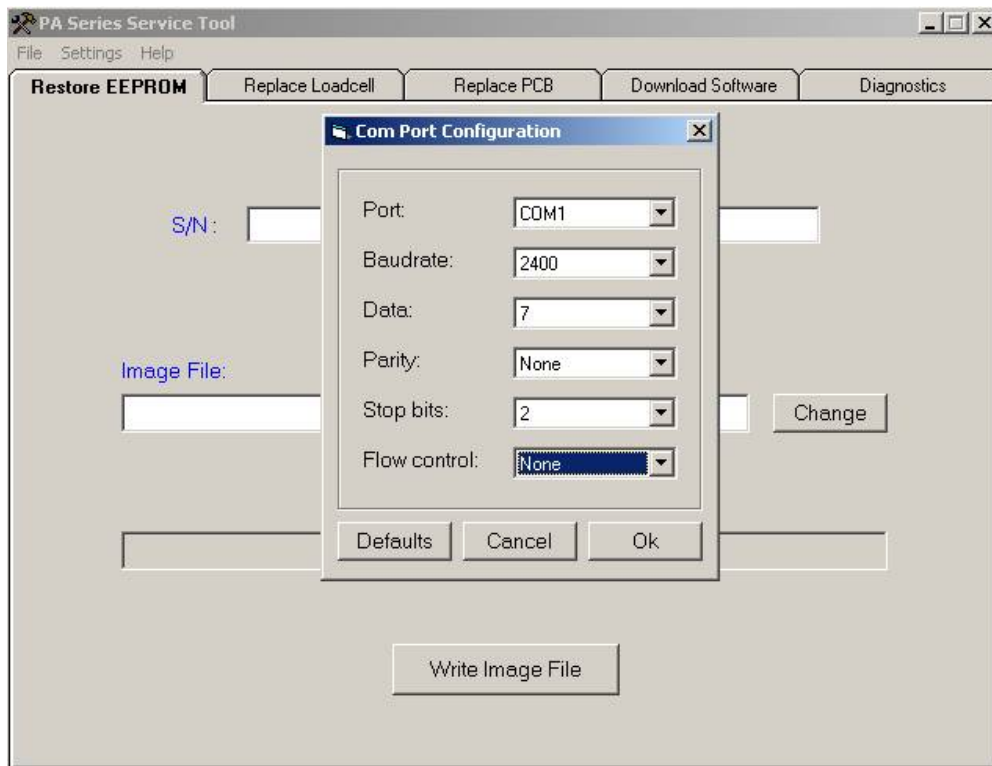
1. Run PAserviceToolDealer.exe
PAserviceToolDealer.exe is used by dealer and files of Data5.ohs and Data6.ohs are given.
2. Get the version information of the service tool by clicking “Help” menu and then selecting “About PA Series Service Tool”.



3. Open COM PORT setting window

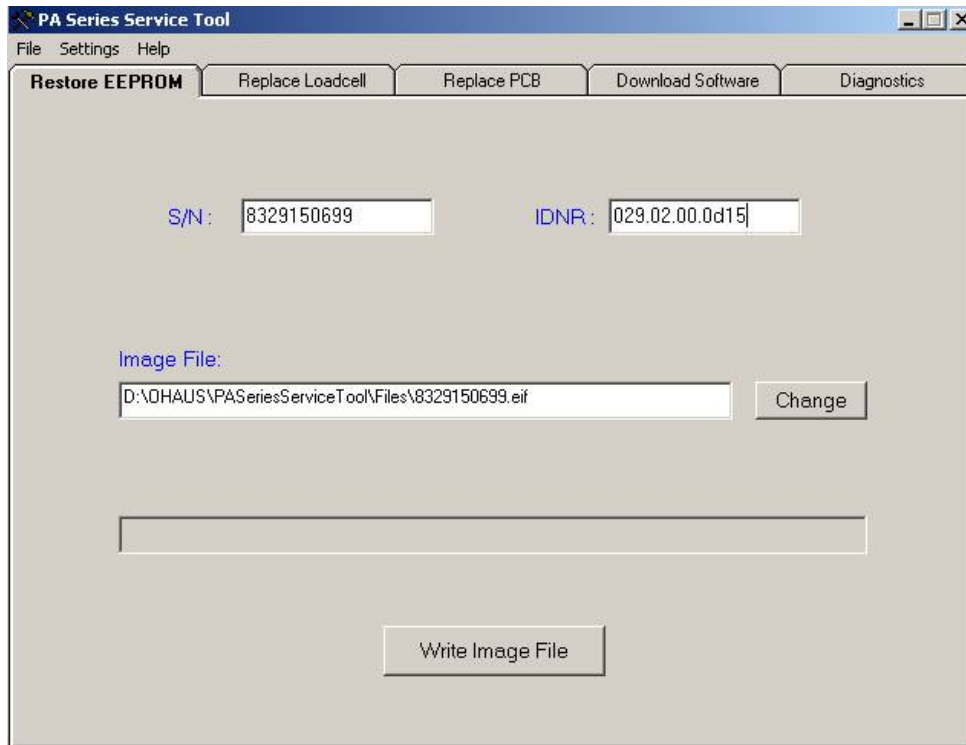


4. According scale RS232 setting to set service tool COM PORT setting



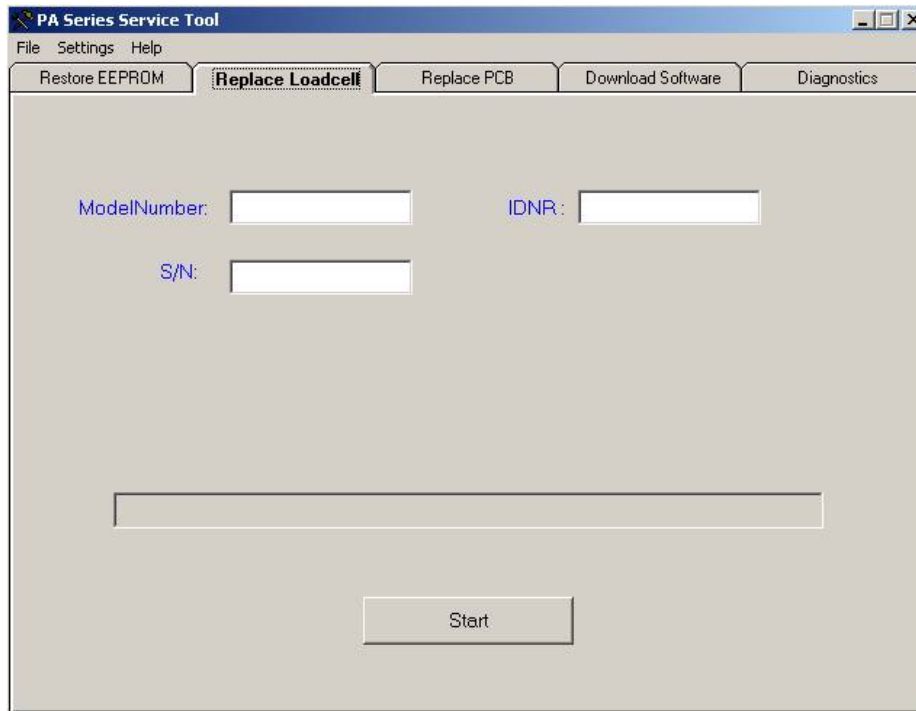
5. Restore EEPROM Function

Enter Serial Number and IDNR Number, select image file and then click Write Image File button to restore EEPROM.



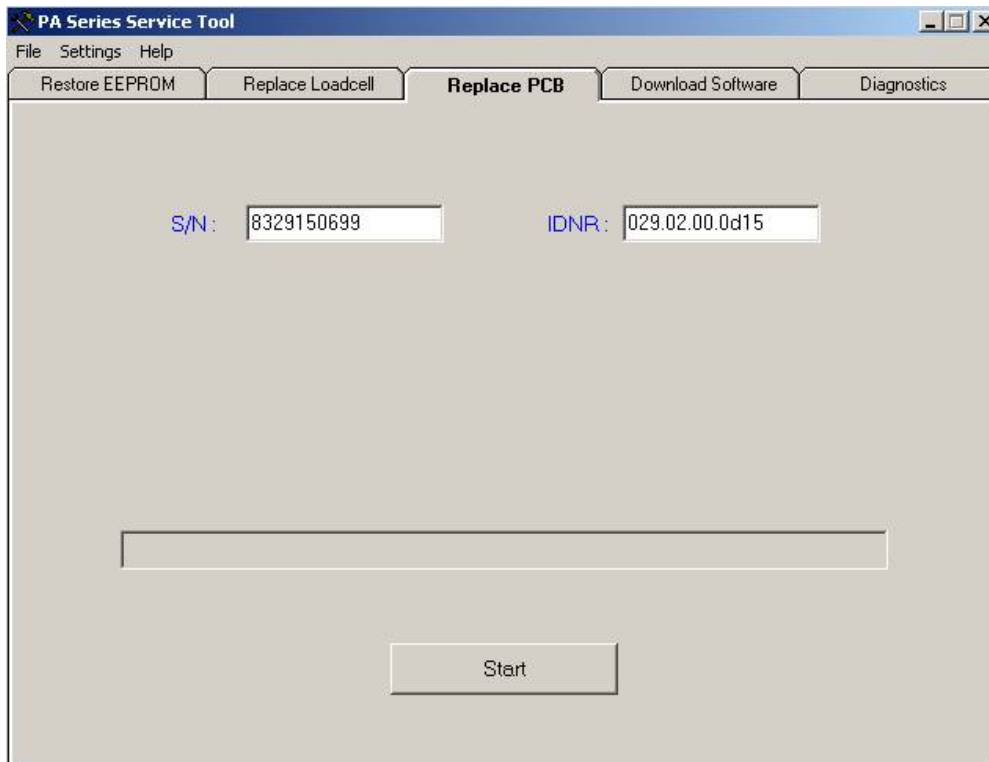
6. Replace Loadcell Function

Enter Model number, IDNR number and Serial Number. Then click Start button to replace loadcell.

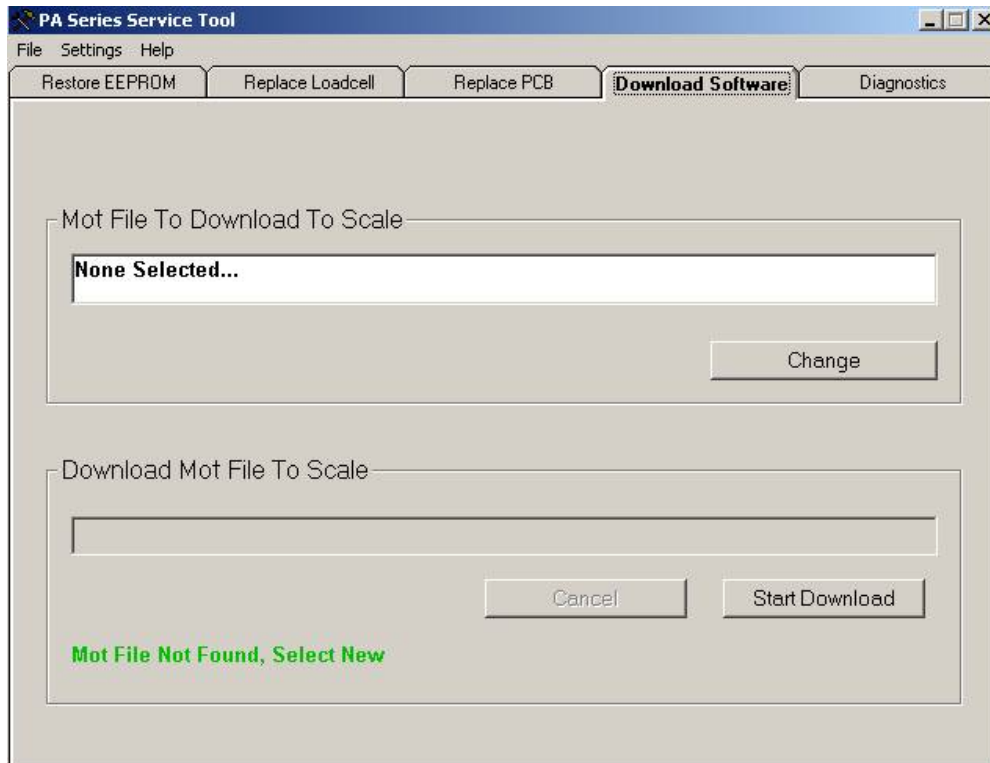


7. Replace PCB Function

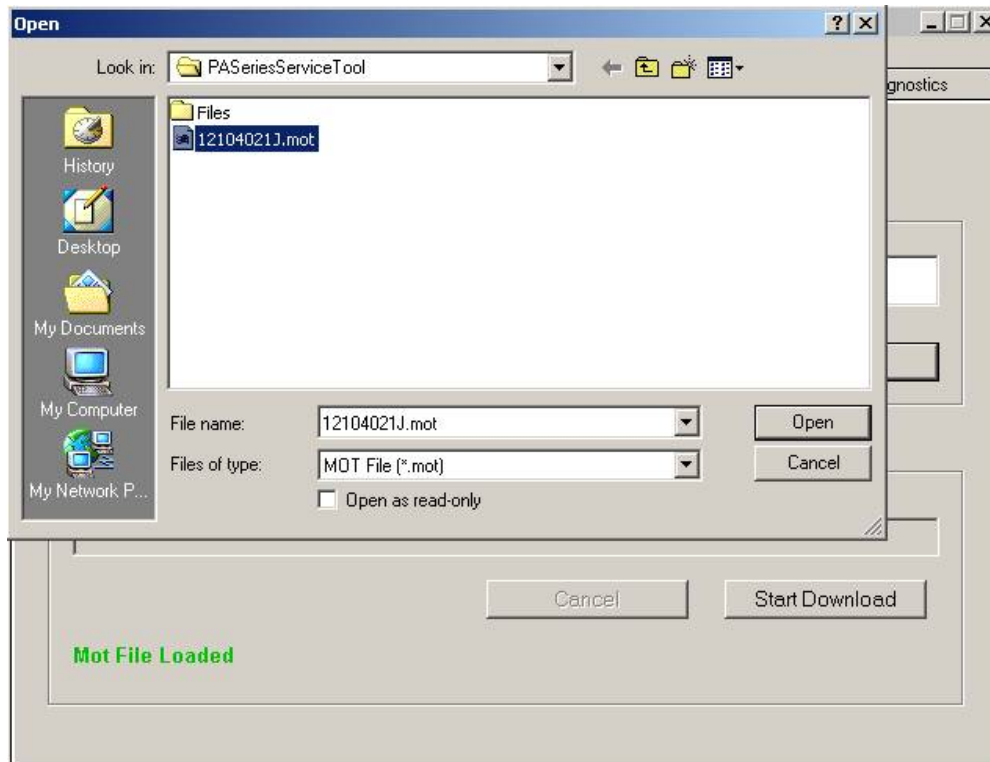
Enter Serial Number and IDNR number then click Start button to replace PCB.



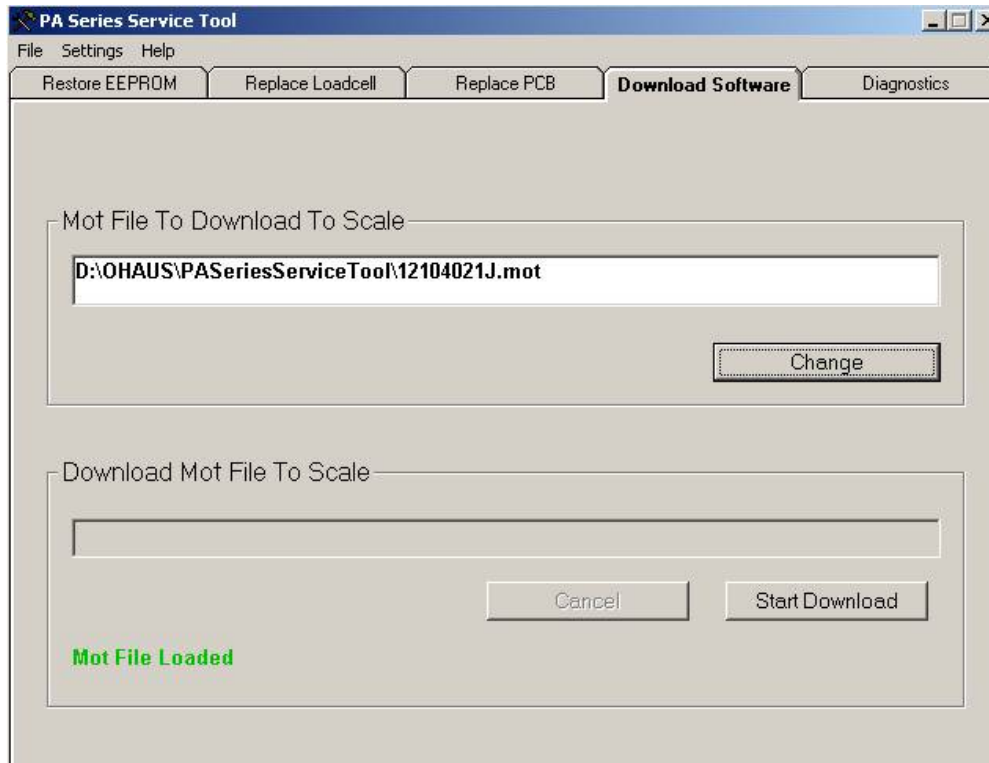
8. Download Software Function



Click change button to select mot file.



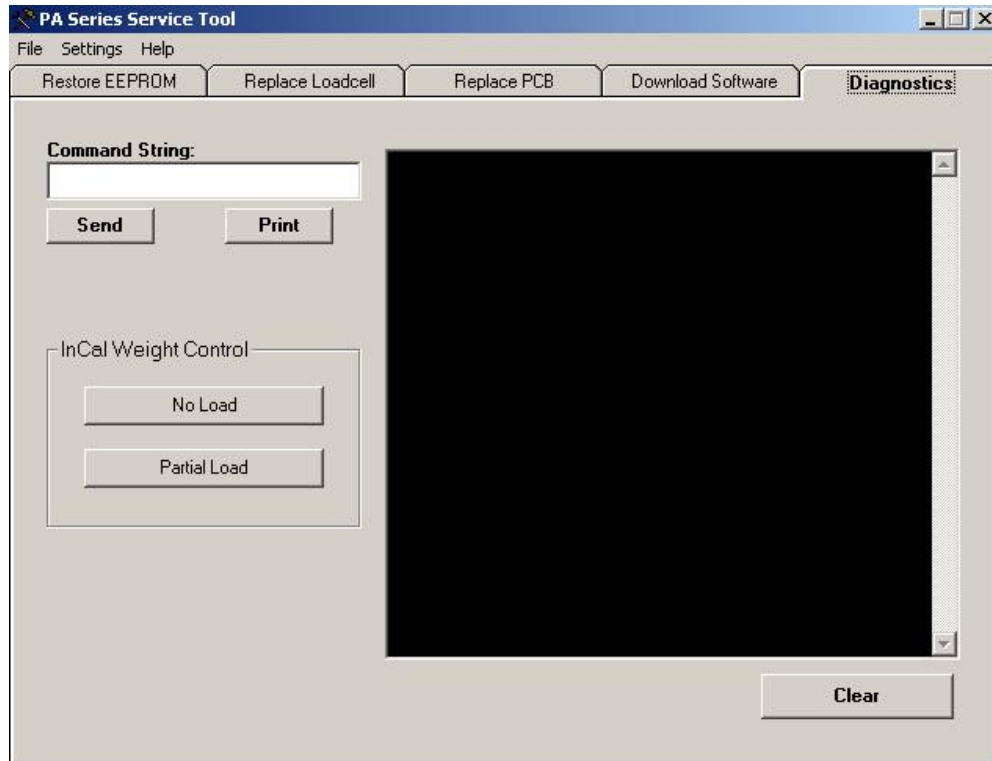
Click Start Download button and waiting to download file.



6. Diagnostic Function

Send command by Entering command and clicking Send button.

Implement InCal Weight Control by clicking No Load and Partial Load button.



Hotline Call to our company TPS Corporation in Viet Nam

Call	Tel
Hotline	(+84.8)62.888.666 (+84.8) 62.999.111
Mr Cuong (24/24)	0084 915.999.111
Mr Xa	0084 974.000.333
Ms Cuong	0084 908.444.000
Delivery	0084 919.555.444